

Daisy Do Little

Designed by Fran Morgan



Fabric	Yardage	#of Pieces to Cut	Dimensions
Bright Green for Stem and Leaves	Small amount	1	Pattern A
Purple Dot for Butterfly	Small Amount	2	Pattern B
Yellow for butterfly body	Small Amount	1	Pattern C
	Small Amount	1	Pattern D

3 3/4" wide, by cutting across the stitching lines. Using a water-soluble fabric marker, mark across stitching lines 1/4" from each end. Using the *Chenille Cutting Guide™* and a rotary cutter, cut between stitching lines leaving each 1/4" end uncut.

Step 4

Using a spray bottle with water, dampen *Chenille By The Inch™* piece;

using a *Chenille Brush™*, brush vigorously to fluff chenille leaving uncut ends unbrushed.

Step 5

Fold *Chenille By The Inch™* in half matching uncut edges. Using 1/4" seam, sew edges together. Form a circle with sewn edge inside and loops on outside, hand tack. Sew to top of flower stem. Sew button to center of flower.

<i>Chenille By The Inch™</i>	
Color	Amount
12 Coconut	1 Package
Other Materials	
Water-soluble fabric marker	
Paper-back fusible webbing	
Sewing thread to match fabric	
Child's Jumper	
7/8" Purple button	
<i>Chenille Brush™</i> and <i>Chenille Cutting Guide™</i>	
Spray bottle with water	

Step 1

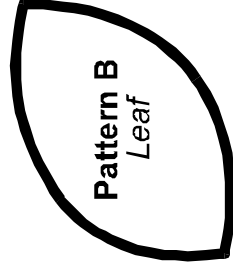
Trace patterns A-D to paper side of paper-backed fusible web. Cut apart, leaving small margin beyond drawn lines. Following manufacturer's instructions, fuse to wrong side of appropriate fabrics; cut on drawn line.

Step 2

Following manufacturer's instructions and referring to photo, fuse patterns to garment. Appliqué edges using satin stitch, matching thread and fabric color.

Step 3

Remove tear-away backing from *Chenille By The Inch™*. Cut *Chenille By The Inch™* into a 3 5/16" long x

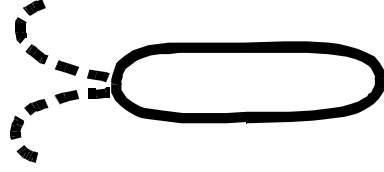


Pattern B
Leaf

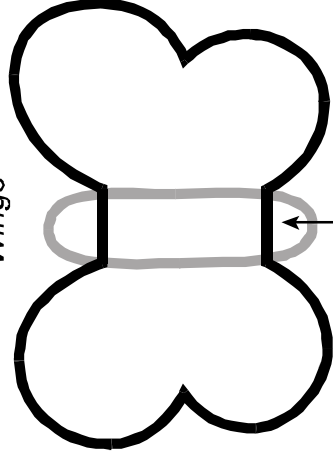


Pattern A
Stem

Pattern D
Butterfly Body



Pattern C
Wings



Pattern D
Placement

Fabric Café™

12973-C Hwy 155 S, Tyler, Texas 75703 (903) 506-5999

© Fabric Café 2003

This pattern compliments of

and Fabric Café, www.fabriccafe.com
Permission to copy for promotional
use with *Chenille By The Inch™*.

Not for Resale

Chenille By The Inch™

Color Guide



Satin Stitch



Flower Placement